

<p><b>Neenah R-4990-BA Airport</b></p>	<p><b>Series R-4990-BA</b> Cut Sheet 10" Wide Airport Bolted</p>
--	--

**10" Wide NEENAH Airport Bolted Extra Heavy Duty Trench Drain Grates and Frames**

Product ID: R-4990-BA



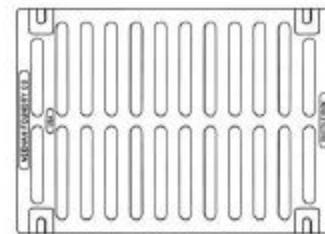
10" Wide Airport Neenah R-4990-BA Series Trench Grate and Frame

Frame is included / Bolted assembly- Please call if only Grate is needed.

Catalog No.	A	B	C	Grate Matl.
R-4990-AA	8	2	6	Gray Iron
R-4990-BA	10	2	8	Gray Iron
R-4990-CA	12	2	10	Ductile Iron
R-4990-DA **	14	2	12	Ductile Iron
R-4990-EA *	17	2	15	Ductile Iron
R-4990-FA *	20	2	18	Ductile Iron
R-4990-HA *	26	2	24	Ductile Iron
R-4990-KA2 *	34	2	31	Ductile Iron
R-4990-OA *	51	2	48	Ductile Iron

\* Type D solid cover available.

\*\* Type C grate available.



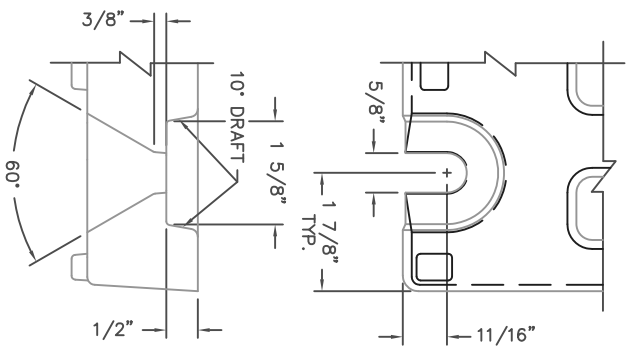
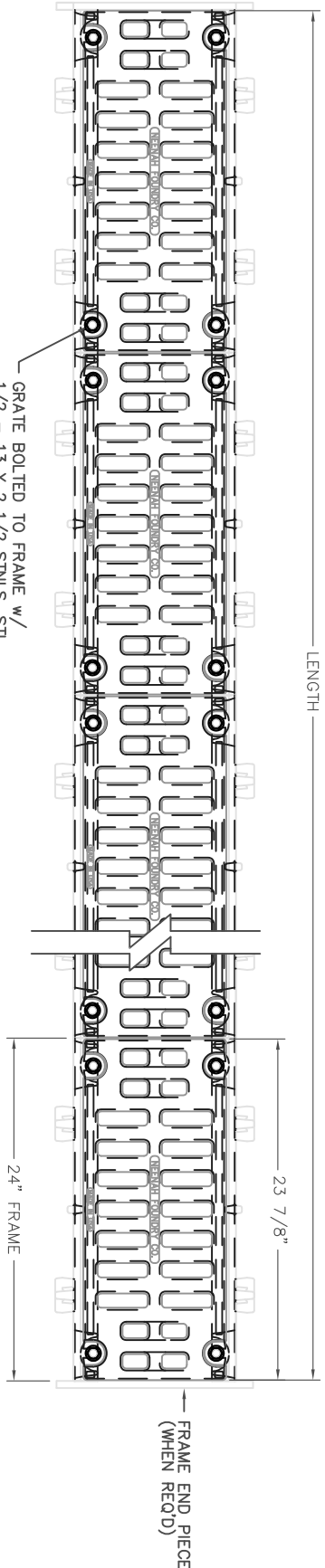
TYPE "A"  
GRATE OPENINGS

**These trench drains are capable of supporting the heavy wheel loads of today's commercial environments. Grates are bolted to gray iron frames.**

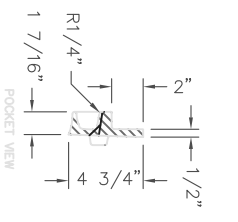
**Suitable for aircraft loading per FAA Advisory Circular AC150/5320-6D.**

**Gray iron furnished per ASTM-A48 Class 35B.  
Ductile Iron furnished per ASTM A536 Grade 80-55-06.**

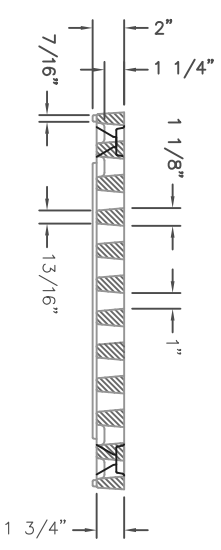
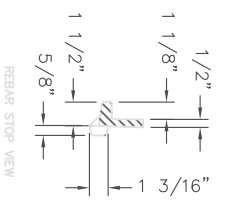
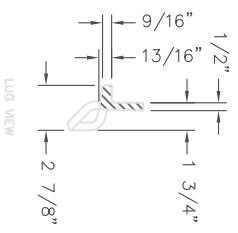




**BOLT SLOT DETAIL**  
SCALE 1:2



**SECTION VIEWS**



**R-4990-BA AIRPORT TRENCH**  
**TYPE "A" GRATE w/ TYPE "B" FRAME**  
**TYPICAL SECTION**

STD. COMPONENT NOS.: SIDE PC. FRAME 4999-2400;  
END PC. FRAME 4990-3110; GRATE 4999-0010  
MATERIAL: CAST GRAY IRON ASTM A-48, CLASS 35B  
FINISH: NO PAINT

DR.	CAG	SCALE	TITLE
CH.		1/8"=1"	R-4990-BA AIRPORT STYLE TRENCH
APP.	DMH GHK		TYPE "A" GRATE w/ TYPE "B" FRAME
DATE	07-24-2012		
www.neendfoundry.com			
NEENAH FOUNDRY HERMAN WISCONSIN 54986			
PHONE: 1-800-558-5075			
			NF-4990BAAB B

# R-4990 Airport, Port & Heavy Industrial Series

## BOLTED TRENCH FOR EXTRA HEAVY DUTY APPLICATIONS

These trench drains are capable of supporting the heavy wheel loads of today's commercial environments. For larger trench widths or greater loading requirements, please contact our Product Engineering Department.

Grates are bolted to gray iron frames.

For suggested forming procedures, see page 285.

Suitable for aircraft loading per FAA Advisory Circular AC150/5320-6D.

Catalog No.	A	B	C	Grate Matl.
R-4990-AA	8	2	6	Gray Iron
R-4990-BA	10	2	8	Gray Iron
R-4990-CA	12	2	10	Ductile Iron
R-4990-DA * **	14	2	12	Ductile Iron
R-4990-EA *	17	2	15	Ductile Iron
R-4990-FA *	20	2	18	Ductile Iron
R-4990-HA *	26	2	24	Ductile Iron
R-4990-KA2 *	34	2	31	Ductile Iron
R-4990-OA *	51	2	48	Ductile Iron

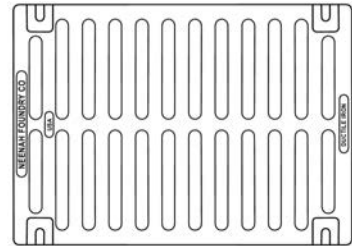
\* Type D solid cover available.

\*\* Type C grate available.

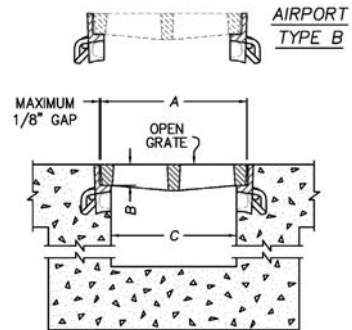
Gray iron furnished per ASTM-A48 Class 35B.

Ductile Iron furnished per ASTM A536 Grade 80-55-06.

These grates are also available with superior duty R-4993 & R-4994 frames as shown on page 287.



TYPE 'A'  
GRATE OPENINGS



Supplied By:

**TRENCHDRAIN  
SUPPLY**

877-903-7246

www.trenchdrainsupply.com